

# MONTHLY MEMBERSHIP PROGRESS REPORT

District 4 A2

Results as of: 4/30/2024

GMT:

LOCATION CALIFORNIA

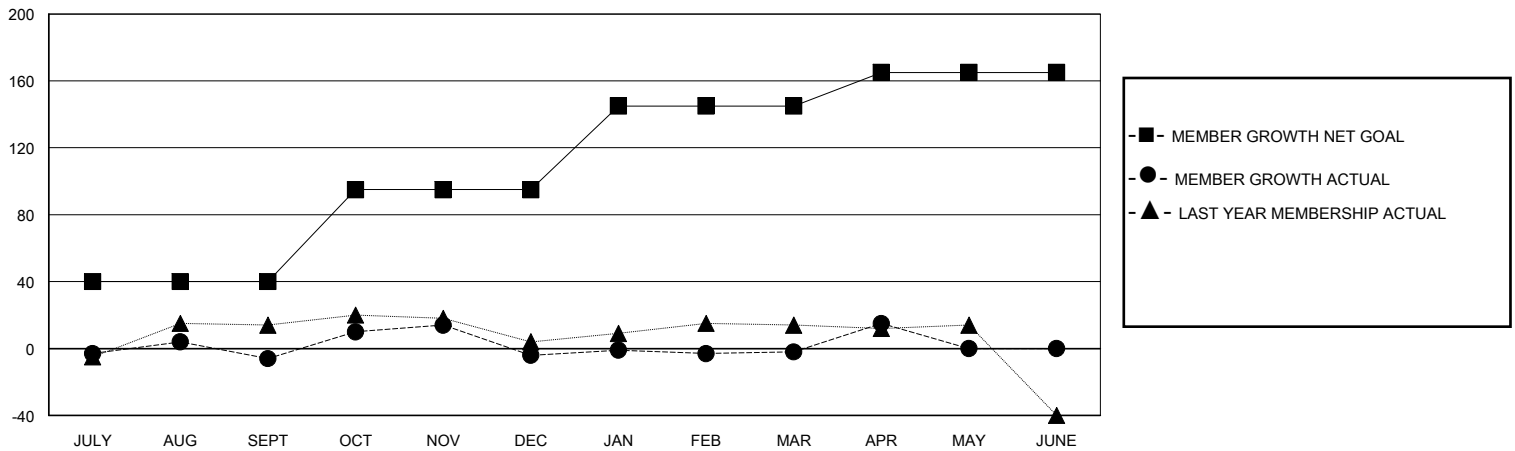
GMT CA

Clubs				Members			
RESULTS FOR 2023-2024				RESULTS FOR 2023-2024			
QUARTER	NEW CLUB GOAL	NEW CLUBS	DROPPED CLUBS	QUARTER	MEMBER GROWTH NET GOAL	MEMBER GROWTH ACTUAL	DROPPED MEMBERS ACTUAL (including transfers)
JULY/AUG/SEPT	0	0	0	JULY/AUG/SEPT	40	49	46
OCT/NOV/DEC	0	0	1	OCT/NOV/DEC	55	53	45
JAN/FEB/MAR	1	0	0	JAN/FEB/MAR	50	36	29
APR/MAY/JUNE	0	0	0	APR/MAY/JUNE	20	47	29

GOALS AND ACTUAL NEW CLUBS CUMULATIVE



GOALS AND ACTUAL MEMBERS CUMULATIVE



DROPPED CLUBS: 1

26 CLUBS OF 63 ADDED 1 OR MORE NEW MEMBERS

GENDER DISTRIBUTION

MALE 1,210 (69.22%)  
FEMALE 535 (30.61%)

DROPPED MEMBERS

DECEASED	19
CLUB CANCELLED	1
OTHER	130
<b>TOTAL</b>	<b>150</b>

[CLICK HERE FOR CUMULATIVE MEMBERSHIP DATA](#)

TOTAL FAMILY UNIT MEMBERS	281
FAMILY MEMBERS PAYING HALF DUES	150